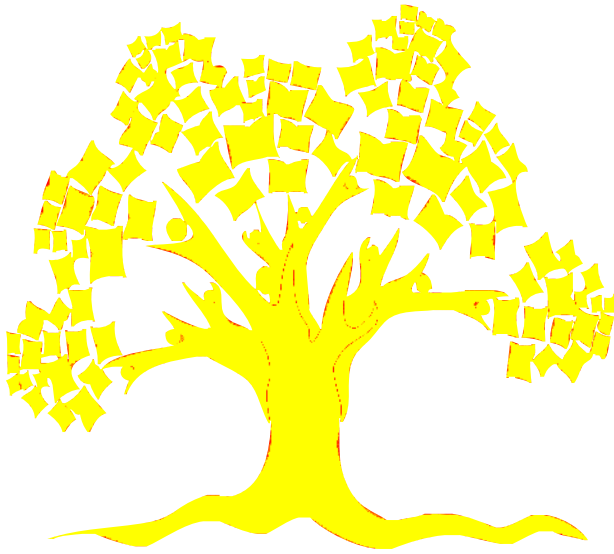


TILLI

TEMPLE ISRAEL LIFELONG LEARNING INSTITUTE 



SUMMER/FALL 2021



Learn with us via Zoom and In-Person!

Hello TILLI Members and New Friends,

How wonderful to now be able to welcome you to join our summer and fall programming both on Zoom and in person. The temple has a COVID policy and we will comply with their instructions whether meeting in the courtyard during the summer or in a classroom this fall (**see page 16 for more information**).

With a year round program, we are pleased TILLI is now under the auspices of the Temple Israel Adult Education. All questions and concerns should be filtered through Ann Abrams, the TILLI coordinator tilli@t israel.org

The TILLI page is changing. The new [TILLI.org](http://t israel.org) page format at t israel.org will provide updated program information, dates, times, and online registration. Frequently presentations are recorded and links are available on the TILLI page, too. By clicking on the link, you are able to hear a presentation. Please also note that the film series is at a new time: 6:15 p.m.

Join us on Zoom or live.

We look forward to seeing you,

Judy and Larry

TILLI Co-chairs



Core Committee

Co-Chairs: Judy Berkowitz, Larry Koff

Archivist and Caring Community: Abby Greenberg, Chair

Budget, Data, Technical Assistance and Elections: Ted Greenwood, Chair

Committee Members: Larry Koff, Debby Raboy

Curriculum: Judy Herman, Chair

Committee Members: Judy Berkowitz, Saralynn Busch, Naomi Gordon, Barbara Koff, Helen Kolsky, Peggy Morrison, Judy Murad, Natalie Schatz, Marlene Yesley

Events and Entertainment: Susan Fleigel, Debi Gandre, Joan Loren, Co-Chairs

Committee Members: Joan Florsheim, John Freeman, Sylvia Green,

Ruth Klepper Andrea Rosenthal

Lunch and Learn: Bob McCorkle, Chair

Committee Members: Fran Putnoi, Harriet Steinberg

Membership: Priscilla Golding, Mark Kaplan, Co-Chairs

Movies and Books: John Freeman, Sandra Wixted, Co-Chairs

Special Events: (OPEN)

Summer Speakers and Mini Sessions: Saralynn Busch, Chair

Winter Speakers: Paula Folkman, Chair

Winter Mini Sessions: Lenny Krulewich, Chair

Clergy Liaison: Rabbi Suzie Jacobson

TILLI Coordinator: Ann Abrams

Managing Director, Center for Adult Jewish Learning: Brigid Goggin

Administrative Coordinator for Education: Emma Glaser

Photos: Andrea Rosenthal; Brochure design: April Ropes

TILLI FALL 2021 SCHEDULE

THURSDAYS: October 14, 21, 28, November 4, 18 & December 2

11:00 a.m. - 12:30 p.m.

Morning Study Groups

12:30 p.m. - 1:45 p.m.

Lunch and Learn Program

2:00 p.m. - 3:30/4:00 p.m.

Afternoon Study Groups

"The discussions helped me understand much of what is happening in America now. A GREAT study group."

— TILLI Participant

MORNING STUDY GROUPS

11:00 a.m. - 12:30 p.m.

- ▶ **Writing from the Heart** - *Robbie Apfel* **(IN PERSON ONLY)**
- ▶ **Felix Mendelssohn: The "Noble Artist"** - *Paula Folkman* **(IN PERSON ONLY)**
- ▶ **Understanding U.S. Healthcare Policy** - *Jon Kingsdale*
- ▶ **Letters to Camondo** by Edmund de Waal - *Peggy Morrison*

AFTERNOON STUDY GROUPS

2:00 p.m. - 3:30 p.m.

- ▶ **Looking at Black Life in America** - *Judy Herman* **(IN PERSON ONLY)**
- ▶ **Choices and Consequences: From Bystanders to Saviors** - *Joanne Tuck*

2:00 p.m. - 4:00 p.m.

- ▶ **Genes: The Inherited Code of Life** - *Barbara Koff*
- ▶ **The Solidarity Dividend: Next Steps in Anti-Racism** - *Larry Koff & Bob Martin*

Deadline: October 1st

Register Now online at TILLI.org

or contact Ann Abrams at tilli@t israel.org, 617-566-3960.

Temple Israel's Lifelong Learning Institute (TILLI) provides opportunities for Temple members and others to engage in peer-led, intellectually stimulating study groups covering a broad range of topics, to enjoy cultural events together, and to develop social relationships and a community.

▶ Writing from the Heart (IN PERSON ONLY)

Robbie Apfel (roberta_apfel@hms.harvard.edu)

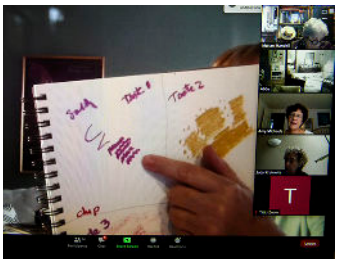
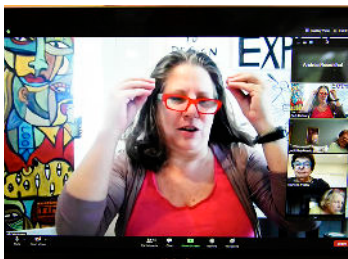
“An outstanding teacher. Very well prepared. She has a delightful participatory style. Her passion for the subject is always evident.”

— TILLI Participant

This course will provide participants with an opportunity to write by “longhand”—in prose and/or poetry—vignettes and short stories about their lives. Writing can be letters to loved ones, a record for oneself, or the beginning of a connected narrative memoir. Current life events may serve to prompt further writing.

Projects will be shared to start the flow of memories and words/images. Writing will take place in class and then be read aloud/shared, for those who so wish, with the group. Between classes, some may want to edit or expand a story begun in class or create a file on their computers to store their writing for later development. Participants should bring a notebook and their favorite writing implement to all classes. Although no outside reading or writing will be assigned, study group members may want to choose or reflect on a starting point to be developed in class. Suggested readings listed below provide resources for anyone who wants more direction.

Suggested Reading: Rabbi Rachel Cowan et al, *Wise Aging*, 2015 (paperback, \$8.47 from Amazon); *Lasting Words: A Guide to Finding Meaning toward the Close of Life*, Claire B. Willis, 2013 (\$ 20 from Amazon); *Memory & Complicity: Poems*, Eve Hoffman (\$20 from Amazon).



Above: Scenes from past TILLI Study Groups

▶ Felix Mendelssohn: The “Noble Artist” (IN PERSON ONLY)

Paula Folkman (pepfolk@earthlink.net)

The “Noble Artist” is how Britain’s Prince Albert described Jakob Ludwig Felix Mendelssohn Bartholdy, who led a privileged, fulfilling, but unfortunately too-short life.

The study group will consider the reasons for his success: a distinguished family background, a beloved older sister (also a composer), a happy marriage, his family’s conversion, and, above all, his compositions—which are unique and possess an unmistakable joy and spirit.

Reading: SGL* will provide materials; this is a mostly listening course.

▶ Understanding U.S. Healthcare Policy or “How Come It’s So Frickin Complicated?”

Jon Kingsdale (jonk@wakely.com)

The course will explore some themes and explode some myths about U.S. health policy, viewed in an international context. It will focus especially on finances: why is ours the most expensive health care in God’s green universe? How does our quality of care compare with that in peer countries? What are the major coverage programs in the U.S. (Medicare, Medicaid, Group & non-Group)? Who are the uninsured? How well has the U.S. performed in response to Covid-19, compared with other countries? What does all of this say about American culture, history and politics?

Preparation: Students will be asked to research and present to the class the Covid-19 responses of several different countries.

Readings: Shactman, David and Stuart Altman, *Power, Politics, and Universal Health Care: The Inside Story of a Century-Long Battle* (2011). Available used from online booksellers, and on Kindle \$10.99.

“I appreciated the enthusiasm and knowledge of the Study Group Leader.”

— TILLI Participant

*SGL=“Study Group Leader” throughout brochure

▶ **Letters to Camondo by Edmund de Waal**

Peggy Morrison (prmorrison@verizon.net)

The Camondo family were Parisian neighbors of the Ephrussi, the subjects of Edmund de Waal's previous book, *The Hare with Amber Eyes*. In a series of imaginary letters addressed to Moise Camondo, the family patriarch, de Waal reflects on memory, connoisseurship, and the Jewish experience in France. We will discuss the social, political, and cultural milieu in which the Camondos flourished and how their generosity to France did not protect them during the Nazi occupation.

"The book was clear and approachable. The SGL was respectful of people's opinions and encouraged discussion."

— TILLI Participant

Preparation: 1 ½ hours a week reading and watching video material.

Reading: Edmund de Waal, *Letters to Camondo* (\$17.99 at Amazon). Additional material will be provided by the SGL. There will be a small fee for copying.



Above: Scenes from past TILLI Study Groups

▶ **Looking at Black Life in America:**

The Plays of August Wilson (IN PERSON ONLY)

Judy Herman (judy@thehermans.org)

August Wilson said he wanted to show a different way to look at Black Americans, "that their lives were affected by the same things that matter to White people—love, honor, beauty, betrayal, duty." In a widely-acclaimed and still often-performed sequence of ten plays, Wilson gave Black Americans the hard, brave words to speak about their lives. "He allowed us to talk," a Black actor said. In this study group, we will look at Wilson's presentation of Black life in such plays as *Ma Rainey's Black Bottom*, *Joe Turner's Come and Gone*, *Fences*, and *The Piano Lesson*. At the same time, we will consider the eloquence Wilson gives his characters as they struggle to have a life in White America.

Preparation: Watching video material and reading scenes from the scripts will take about 1 ½ hours per week.

Reading: The SGL will provide internet links to scripts and scenes. It is essential that study group members be able to access the internet. Printed versions of the plays, for those who prefer them, are widely available from libraries, and online, new and used, from about \$5 upwards.

▶ **Genes: The Inherited Code of Life**

Barbara Koff (barbara.smith.koff@gmail.com)

How do genes work and interact with the environment? We will look at the history of scientific discoveries, culminating in the ability to read and edit genes as well as the social, moral, racial and ethical issues surrounding heredity. We will look at genetics and molecular biology, with slides to illustrate the astonishing complexity that regulates our identities and heredity. The core of the study group will be questions and discussion to ensure a grasp of science and the moral/ethical issues. The text is written for a general audience, weaving science, personal, and social history. Additional short films will also be available for further explanation of science.

Preparation: The reading assignments will be between 50-100 pages.

Reading: Mukherjee, Siddhartha, *The Gene: An Intimate History*, paperback \$16.00, Kindle \$14.

Afternoon Study Groups

LUNCH AND LEARN PROGRAM

► The Solidarity Dividend: Next Steps in Anti-Racism

Larry Koff (larry.koff@outlook.com)

Bob Martin (Bob_Martin63@hotmail.com)

Institutional racism has undermined our society, affecting not only Black, Brown and Indigenous Americans, but White Americans as well. In her book, *The Sum of Us*, Heather McGhee illustrates that we have created a zero-sum gain that perpetuates a mindset (if you benefit, I must be losing), even with evidence to the contrary. After considering some of the key socio-political problems that McGhee illustrates as still being perpetuated by racism, white privilege and political partisanship, we will discuss how coalition-building is helping us understand and address these inequities. JALSA (Jewish Alliance for Social Justice) will provide speakers to explain the sources and effects of institutional racism, while presenting current proposals that will address discriminatory trends in education, housing, immigration, voting rights and approaches to climate change. Classes will include lectures and discussions.

Preparation: *The Sum of Us* should be read prior to the first class.

Reading: McGhee, Heather, *The Sum of Us: What Racism Costs Everyone and How We can Prosper Together* by Heather McGhee, \$17.98 paperback, \$13.99 ebook. We will also read excerpts from various journals.

► Choices and Consequences: From Bystanders to Saviors, Responses to Saving Jews during the Holocaust

Joanne Tuck (jwttuck1@verizon.net)

This course focuses on the behavior of individuals during the Nazi period.

While we can categorize people as bystanders, upstanders, rescuers and saviors, these labels are often defined simplistically when they are often complicated. We shall examine both individual acts of betrayal and acts of rescue for those marked for death. Our focus will be mainly on hope and heroic behavior. There is extensive historical background for every situation and new research gives us a broader knowledge and understanding of actual events in the life and death struggle for survival. As we reflect on historical events, we have so many questions about how we will respond to the challenges to come in our own lives. The course will be a mixture of lectures and films, which should lead to lively discussion.

Preparation: Reading and viewing will take approximately 2 hours per week.

Reading: Snyder, Timothy, *Black Earth: The Holocaust as History and Warning*. Paperback: \$16.95 online. The SGL will provide additional handouts, films, and videos.

Join us!

Thursday Afternoons, 1:00 - 1:45 p.m.

RSVP: tilli@tisrael.org for a ZOOM link



OCTOBER 14

ALAN VERSKIN (ON ZOOM)

*A Fitful Friendship in the Age of Empire:
A Yemeni Jew Shows a French Professor His World*

OCTOBER 21

KAREN FROSTIG

Memorializing Latvia's First Concentration Camp



OCTOBER 28

STEVE JERMANOK AND LISA LEAVITT

*Should I Stay or Should I Go Now:
An Update on Traveling Internationally*

NOVEMBER 4

JEN GRELLA (ON ZOOM)

Tikkun Olam: Addressing Food Insecurity



NOVEMBER 18

TED GREENWOOD

The 2021 Israeli Election and Its Outcome

DECEMBER 2

CLOSING LUNCH

Join TILLI for a Winter and Spring Preview



UPCOMING TILLI PROGRAMS *at a glance*

JUNE 2021

S	M	T	W	Th	F	S
		1	2	3	4	5
6	7	8	9	10	11	12
13	14	15	16	17	18	19
20	21	22	23	24	25	26
27	28	29	30			

- Speaker (Abrams) - Jun 3 (11:00 a.m.) (ZOOM)
- Speaker (Weitzenkorn) - Jun 10 (11:00 a.m.) (ZOOM)
- Speaker (Freedman) - Jun 17 (11:00 a.m.) (ZOOM)
- Event (Peabody Essex) - Jun 24 (2:00 p.m.) (IN PERSON)

JULY 2021

S	M	T	W	Th	F	S
				1	2	3
4	5	6	7	8	9	10
11	12	13	14	15	16	17
18	19	20	21	22	23	24
25	26	27	28	29	30	31

- Film (*Helter in LA*) - Jul 1 (6:15 p.m.) (ZOOM)
- Film (*Do the Right Thing*) - Jul 8 (6:15 p.m.) (IN PERSON)
- Film (*Pride*) - Jul 15 (6:15 p.m.) (ZOOM)
- Film (*Norma Rae*) - Jul 22 (6:15 p.m.) (IN PERSON)
- Film (*Chicago 7*) - Jul 29 (6:15 p.m.) (ZOOM)

AUGUST 2021

S	M	T	W	Th	F	S
1	2	3	4	5	6	7
8	9	10	11	12	13	14
15	16	17	18	19	20	21
22	23	24	25	26	27	28
29	30	31				

- Event (The Light Gets In) - Aug 5 (11:00 a.m.) (IN PERSON)
- Event (The Light Gets In) RAINDATE - Aug 12 (11:00 a.m.) (IN PERSON)
- Film (*Milk*) - Aug 19 (6:15 p.m.) (ZOOM)
- Film (*Notes from the Field*) - Aug 26 (6:15 p.m.) (IN PERSON)

SEPTEMBER 2021

S	M	T	W	Th	F	S
			1	2	3	4
5	6	7	8	9	10	11
12	13	14	15	16	17	18
19	20	21	22	23	24	25
26	27	28	29	30		

- Event (Poetry in the Courtyard) - Sep 2 (4:00 p.m.) (IN PERSON)

OCTOBER 2021

S	M	T	W	Th	F	S
					1	2
3	4	5	6	7	8	9
10	11	12	13	14	15	16
17	18	19	20	21	22	23
24	25	26	27	28	29	30

- TILLI Fall Semester Registration Deadline - Oct 1

- Fall Semester Study Group Sessions/Lunch & Learn October 14, 21 & 28

Morning Study Groups: 11:00 a.m.
 Afternoon Study Groups: 2:00 p.m.
 Lunch and Learn: 1:00 p.m.

NOVEMBER 2021

S	M	T	W	Th	F	S
	1	2	3	4	5	6
7	8	9	10	11	12	13
14	15	16	17	18	19	20
21	22	23	24	25	26	27
28	29	30				

- Fall Semester Study Group Sessions/Lunch & Learn November 4, 18 & December 2 (No TILLI on November 11 or 25 due to Veterans Day and Thanksgiving Day holidays.)

DECEMBER 2021

S	M	T	W	Th	F	S
			1	2	3	4
5	6	7	8	9	10	11
12	13	14	15	16	17	18
19	20	21	22	23	24	25
26	27	28	29	30	31	

Join us for
LUNCH AND LEARN
 Thursday Afternoons,
 1:00 - 1:45 p.m.
 More info on page 8.

See pages 13-17 for Summer Programming info including book and film discussions, speakers and events.
 Register online for Fall Semester at TILLI.org by October 1st or call Ann Abrams at 617-566-3960

Study Group Leaders



Roberta Apfel (*Writing from the Heart*) practiced psychiatry and psychoanalysis and was on the faculty at Harvard Medical School. She is also a life-long writer. She knows the value of writing, especially when done freely, spontaneously and by hand, and has found that writing in a safe, confidential (non-therapy, non-judgmental) workshop is a good way to remember and memorialize feelings and experiences.



Paula Folkman (*Felix Mendelssohn: The "Noble Artist"*), holds a B.A. and M.A.T. in music theory, history and education. She has been pianist, choral singer, teacher, editor, accompanist, choir director and coach.



Judith Herman (*The Plays of August Wilson*) has a PhD in English and American literature. She has taught undergraduate English literature, led many poetry workshops, and published her own poetry. Her most recent course at TILLI was on contemporary American poets.



Jon Kingsdale, PhD, (*Understanding U.S. Health Care Policy*), was a senior executive at several local health plans before starting and leading the Massachusetts Health Connector, the model for health insurance exchanges under the Affordable Care Act (ACA). He has worked with the federal government, a dozen state-based marketplaces and various private clients focusing on the implementation of the ACA. He currently teaches health policy part-time.



Barbara Smith Koff, PhD, (*The Gene*), an Emeritus Professor of Biochemistry at Boston University School of Medicine, taught medical and graduate students molecular biology. She led research grants on collagen gene regulation in wound healing, tumors and fibrosis using DNA cloning, molecular biology, cell biology, and transgenic mice.

Study Group Leaders



Larry Koff (*The Solidarity Dividend*) was a community development organizer serving in the Peace corps in the Niger Republic. He is now a retired city planner with 25 years experience at the Boston Redevelopment Authority and 20 years managing his own consulting practice providing planning services in housing, environment, transportation, economic development to communities mostly in Massachusetts. He has taught courses in TILLI on Regional Planning, Housing Options for Seniors, and Transportation choices.



Robert Martin, Ed.D., (*The Solidarity Dividend*), is an African American educator, a retired career BPS principal, and Charter School Superintendent. His family was very involved with Boston's civil rights movement in the 1960s, including organizing with Dr. Martin Luther King. His teaching career began during Boston's court ordered desegregation in 1974, resulting in his becoming the system's youngest Principal at 28 years old, in 1978. His family has belonged to Temple Israel since 1990. Currently, he coaches academically-talented students at Beacon Academy. He has taught two previous classes at Temple Israel's TILLI Program.



Peggy Morrison (*Letters to Camondo*) has a PhD in English and American Literature and has taught at the secondary and college levels. Among the many TILLI Study Groups she has led are *The Hare with Amber Eyes* and *The Dreyfus Affair*.



Joanne Tuck (*Choices and Consequences*). For many years, Joanne taught Facing History and Ourselves: Holocaust and Human Behavior at Wentworth Institute of Technology. She specifically studied the Holocaust at Yad Vashem and Facing History where she was on the Teachers Advisory Board. She was fortunate to have a sabbatical at the USHMM in Washington, DC. For 20 years she attended many Holocaust conferences both in the US and internationally. She is looking forward to a third opportunity to teach at TILLI.

Register online at TILLI.org
or call Ann Abrams at 617-566-3960.

"SGL chose to focus on sub-topics that were consequential to our lives. She provided us with readings we laypeople could understand. She was constantly looking for good material for us."
— TILLI Participant

TILLI SUMMER SESSION

REGISTER NOW at TILLI.org or contact Ann Abrams via email: tilli@tisrael.org or leave a message at 617-566-3960.

Please provide your name, email address, temple affiliation, and identify which session(s) you would like to attend (virtually). Events are FREE but you must register to receive a ZOOM link.

MORNING VIRTUAL MINI SESSIONS

Speaker: Ann Abrams, TILLI Coordinator and TI Librarian
Thursday, June 3: 11:00 - 12:30 p.m. (ON ZOOM)

Ann Abrams: "Music that has lifted my spirits this past year. This has been quite the year! Oy! And sometimes the only thing that has lifted my spirits has been watching a video of musicians from all over the world playing "Listen to the music" by the Doobie Brothers, or Mary Chapin Carpenter playing from her living room with her dog and cat by her side. Join me as we watch/listen to music and performances that have blossomed during this past difficult year."

Speaker: Steve Weitzenkorn, brother of TILLI member Helene Weitzenkorn
Thursday, June 10: 11:00 - 12:30 p.m. (ON ZOOM)

Steven is the author of an historical novel entitled *Shakespeare's Conspirator: The Woman, The Writer, The Clues*. It is a novel about a Jewish woman of color who may have written many of Shakespeare's works. He will explore the Shakespeare authorship question and the evidence pointing to Emelia Bassano Lanier. (www.shakespearesconspirator.com/speaking.html)

Speaker: Louise Freedman, TILLI Member.
June 17: 11:00 - 12:30 p.m. (ON ZOOM)

Louise will talk about Bryan Stevenson and his book *Just Mercy*, The Equal Justice Initiative and where we are today. She will include some personal reflections/intersections she has experienced.

EVENTS

Peabody Essex Museum (ON ZOOM)



Thursday, June 24: 2:00 p.m.

Jacob Lawrence: *The American Struggle* is the first museum exhibition from the series *Struggle: From the History of the American People (1954-56)* by the best known black American artist of the 20th century, Jacob Lawrence (1917-2000). Created during the modern civil rights era, Lawrence's thirty intimate panels interpret pivotal moments in the American Revolution and the early decades of the republic between 1770 and 1817 and, as he wrote, "depict the struggles of a people to create a nation and their attempt to build a democracy."

TILLI SUMMER SESSION

REGISTER NOW at TILLI.org or contact Ann Abrams via email: tilli@tisrael.org or leave a message at 617-566-3960.

Please provide your name, email address, temple affiliation, and identify which session(s) you would like to attend (virtually). Events are FREE but you must register to receive a ZOOM link.



"The Light Gets In" (LIVE IN-PERSON)

Thursday, August 5: 11:00 a.m. (Raindate: August 12)

Studio Without Walls installed an exhibit in the Riverway Park. Three artists whose work is in the exhibit will act as docents for TILLI members as they tour the art exhibit on foot. The distance is about 200 yards. There are 17 sculptures along a flat path which is "handicapped accessible/ADA compliant. Benches are all along the way, if a rest is required."

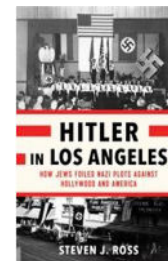
Tour: 1 hour. Meet at the Longwood stairs at the Longwood T stop. Riverway Park is located adjacent to the T station.

EVENING TILLI SUMMER FILM & BOOK SERIES

All programs below run from 6:15 - 8:45 p.m. with a 10 minute break.

A 30-minute conversation will follow each screening.

PROTEST. We are living in an era of increased protests, demonstrations, and riots from the streets of Minneapolis to the steps of the Capitol building. It seems a most opportune time to reflect and look at earlier protests and movements. Protest occurred within different but sometimes similar sets of economic, racial, social, cultural and political contexts. The book talk and each movie will have conditions that feel contemporary despite the fact that they go back in time (over fifty years ago.) Each movie is adapted from a real series of events though none claims to be authentic and historically accurate. However, the book talk is about very real events.



Hitler in LA (2018) (ON ZOOM)

Thursday, July 1

Judy Berkowitz, Discussion Leader

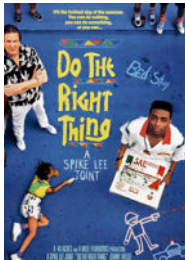
Steven J. Ross writes that Adolf Hitler and Joseph Goebbels "saw Hollywood as central to their efforts to win over the American public and the world to their cause," so Nazis and other fascists in L.A. planned terrorist attacks against Jews and plotted to kill high-profile Hollywood figures including, according to Mr. Ross's account, Al Jolson, Charlie Chaplin and

TILLI SUMMER SESSION

REGISTER NOW at TILLI.org or contact Ann Abrams via email: tilli@tisrael.org or leave a message at 617-566-3960.

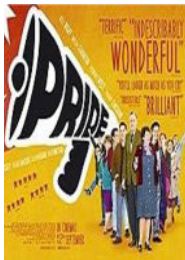
Please provide your name, email address, temple affiliation, and identify which session(s) you would like to attend (virtually). Events are FREE but you must register to receive a ZOOM link.

Samuel Goldwyn. Ross retells the story on video when he was honored at Tel Aviv University. The Q and A are as compelling and as current as the story he tells. A Pulitzer finalist. (90 minutes)



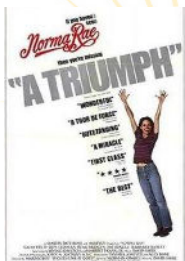
Do the Right Thing (1989)
Thursday, July 8 (LIVE IN THE TI COURTYARD)
Sandy Wixted, Discussion Leader

The story explores a Brooklyn neighborhood's simmering racial tension, which culminates in tragedy and violence on a hot summer day. Written and directed by Spike Lee, this movie received multiple award nominations. In 1999, the film was deemed "culturally, historically, and aesthetically significant" by the Library of Congress, in its first year of eligibility, and was selected for preservation in the National Film Registry. (Approx. 2 hours).



Pride (2014) (ON ZOOM)
Thursday, July 15
Sandy Wixted, Discussion Leader

Based on a true story, the film depicts a group of lesbian and gay activists who raised money to help families affected by the British miners' strike in 1984, at the outset of what would become the Lesbians and Gays Support the Miners campaign. Nominated for a Golden Globe. (Approx. 2 hours.)



Norma Rae (1979)
Thursday, July 22 (LIVE IN THE TI COURTYARD)
John Freeman, Discussion Leader

A young single mother and textile worker agrees to help unionize her mill despite the problems and dangers involved. Oscar winner. Martin Ritt direction. (Approx. 2 hours.)

TILLI SUMMER SESSION

REGISTER NOW at TILLI.org or contact Ann Abrams via email: tilli@tisrael.org or leave a message at 617-566-3960.

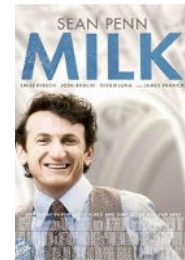
Please provide your name, email address, temple affiliation, and identify which session(s) you would like to attend (virtually). Events are FREE but you must register to receive a ZOOM link.



The Trial of the Chicago 7 (2020) (ON ZOOM)
Thursday, July 29

John Freeman, Discussion Leader

The story of 7 people on trial stemming from various charges surrounding the uprising at the 1968 Democratic National Convention in Chicago, Illinois. Golden Globe Winner, Oscar Nominated. Aaron Sorkin script writing and direction. (Approx. 2 hours)



Milk (2008) (ON ZOOM)
Thursday, August 19

John Freeman, Discussion Leader

The story of Harvey Milk and his struggles as an American gay activist who fought for gay rights and became California's first openly gay elected official. Oscar winner. Gus Van Sant direction. (Approx. 2 hours)



Notes From the Field (2018)
Thursday, August 26 (LIVE IN THE TI COURTYARD)
Sandy Wixted, Discussion Leader

Anna Deavere Smith brings to life the stories of 18 real-life people, among them current and former inmates, protesters, educators and politicians. (90 Minutes)

TILLI SUMMER SESSION

REGISTER NOW to Ann Abrams (tilli@tisrael.org) or online at TILLI.org.
 Email your name, email address, temple affiliation, and identify the session in which you wish to enroll.
 Events are FREE but you must register to receive a ZOOM link.

During the summer, all TILLI emails should be addressed to TILLI@tisrael.org.
 This email will be answered by Ann Abrams, Brigid Goggin, or Emma Glaser.



SPECIAL IN PERSON EVENT

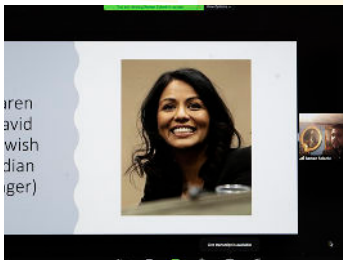
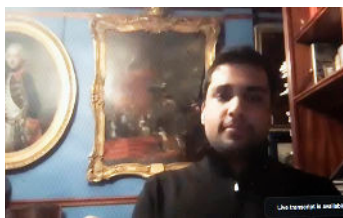
Thursday, September 2

Poetry in the Courtyard:

Rhoda Wald plus other Temple Israel poets
(LIVE IN THE TI COURTYARD)

4:00 - 6:00 p.m.

TILLI members will share their own poetry, and Rhoda Wald will read poems from her new book, *The House That Loved Us*.



Above: Scenes from past TILLI Study Groups

PLEASE REGISTER ONLINE AT TILLI.ORG

- OR - complete this paper registration form and submit with payment by October 1st.

REGISTER EARLY. MANY CLASSES HAVE LIMITED ENROLLMENT

All classes can be attended in person or Zoom (unless indicated as IN PERSON ONLY)

Please indicate your preference here: IN PERSON ZOOM

Name _____

Address _____ City/Zip _____

Home Phone _____ Cell Phone _____

Email _____

Temple Affiliation _____ None

Morning Study Groups (begin at 11:00 a.m.) Please indicate first and second choice.

1st choice _____ 2nd choice _____ **Writing from the Heart - Robbie Apfel (IN PERSON ONLY)**

1st choice _____ 2nd choice _____ **Felix Mendelssohn - Paula Folkman (IN PERSON ONLY)**

1st choice _____ 2nd choice _____ **Understanding U.S. Healthcare Policy - Jon Kingsdale**

1st choice _____ 2nd choice _____ **Letters to Camondo by Edmund de Waal - Peggy Morrison**

Afternoon Study Groups (begin at 2:00 p.m.) Please indicate first and second choice.

1st choice _____ 2nd choice _____ **Looking at Black Life in America - Judy Herman (IN PERSON ONLY)**

1st choice _____ 2nd choice _____ **Genes: The Inherited Code of Life - Barbara Koff**

1st choice _____ 2nd choice _____ **The Solidarity Dividend - Larry Koff & Bob Martin**

1st choice _____ 2nd choice _____ **Choices and Consequences - Joanne Tuck**

TILLI on ZOOM AND IN-PERSON

Contact Ann Abrams with any questions: tilli@tisrael.org or 617-566-3960.

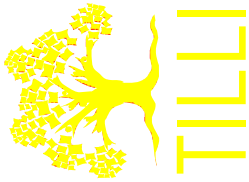
FEES: \$50.00 (members in good standing at Temple Israel or other local synagogues)

\$100.00 (community members unaffiliated with a synagogue)

Make checks payable to Temple Israel and mail by October 1st to:

TILLI-Temple Israel, 477 Longwood Avenue, Boston, MA 02215

Please note: Limited free parking on the lower level of the garage. Please try to car pool.



Temple
Israel
Lifelong
Learning
Institute

Non-Profit
Organization
US Postage
PAID
Permit No. 50648
Boston, MA

*Living Judaism through discovery,
dynamic spirituality, and righteous impact.*